

# Reimagine K-12 Classroom Transformation



Outsource to an Experienced Service Delivery Partner to Implement K-12 Classroom Technology

School districts want a single touchpoint to help manage their digital classroom technology transformation, overcome complexity and maximize their budget.

**65%**

of education professionals want to upgrade classroom technology and learning tools<sup>1</sup>

**56%**

of educators want to use technology to improve student performance<sup>2</sup>

**43%**

of K-12 teachers are eager to use new classroom technologies<sup>2</sup>

## Modernizing the Classroom for Modern Learners

**500+**

schools serviced

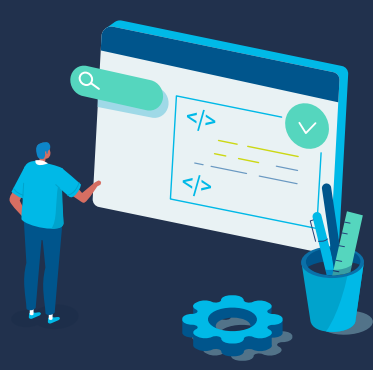
**1,500**

interactive displays/year

**5,000**

tech products/year

Value-added resellers (VARs) and school districts partner with Shyft Global Services to procure, configure and install classroom technology products such as:



- Interactive whiteboards
- Teleconference systems
- Projection systems
- Video walls
- And more

Leveraging an experienced technology service partner means you benefit from:



Fully integrated, ready-to-use technology delivered onsite to the classroom



Accelerated classroom modernization



Professional, reliable installation by highly trained, specialized engineers

## Rethink Your Technology Service Delivery Process

Your service delivery partner should be:

### ✓ Committed

- Quick turnaround from request to installation
- Adaptable to state and district requirements
- Focused on digital classroom transformation

### ✓ Collaborative

- Scalable process
- Build on current quotes
- Thorough user training

### ✓ Integrated

- End-to-end managed process
- Single provider for classroom technology
- Customizable configurations at installation



## Simplified Technology Delivery Process for Education Buyers



- 1 Technology requested and order placed
- 2 Technology shipped to school
- 3 Removal of existing technology as needed
- 4 Installation and configuration of new technology

Tech Data\* has supported our school district for several years, and we have increased business each year while establishing a footprint in almost every one of the 1,800 schools in the district. Not only has Tech Data provided essential classroom products, with over 10,000 interactive flat panels in the last two years, but they have also been a partner when it came to navigating a challenging global supply chain. **Tech Data is a team that shows up every day, works hard and ensures that our schools have what they need to be successful.**

—Advanced Technology Executive, US Department of Education

\*Tech Data Global Lifecycle Management (GLM) is now Shyft Global Services.

Accelerate digital classroom transformation with a single services delivery partner. **One shift is all it takes.**

[Contact us](#) to learn more and start simplifying your classroom technology process.